

Coaxial

# Power Splitter/Combiner

## ZAPD-30+

2 Way-0° 50Ω 20 to 3000 MHz



CASE STYLE: F14

Connectors	Model	Price	Qty.
SMA	ZAPD-30-S+	\$84.95	(1-9)

**+ RoHS compliant in accordance with EU Directive (2002/95/EC)**

*The +Suffix has been added in order to identify RoHS Compliance. See our web site for RoHS Compliance methodologies and qualifications.*

### Maximum Ratings

Operating Temperature	-55°C to 100°C
Storage Temperature	-55°C to 100°C
Power Input (as a splitter)	1W max.
Internal Dissipation	0.125W max.

### Coaxial Connections

SUM PORT	S
PORT 1	1
PORT 2	2

### Features

- wideband, 20 to 3000 MHz
- excellent amplitude unbalance, 0.1 dB typ.
- excellent phase unbalance, 1 deg. typ.

### Applications

- UHF TV/DVT
- aircraft radio navigation
- PCS/cellular/GSM

### Electrical Specifications

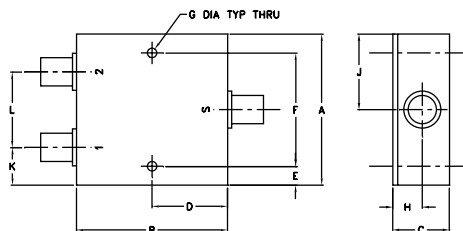
FREQ. RANGE (MHz)	ISOLATION (dB)			INSERTION LOSS (dB) ABOVE 3.0 dB			PHASE UNBALANCE (Degrees)			AMPLITUDE UNBALANCE (dB)			VSWR (:1)									
	L	M	U	L	M	U	L	M	U	L	M	U	S	OUT								
	Typ.	Min.	Typ.	Min.	Typ.	Min.	Typ.	Max.	Typ.	Max.	Typ.	Max.	Typ.	Max.								
20-3000	14	12	16	12	20	14	1.1	1.5	1.1	1.8	1.4	2.3	3	5	9	0.3	0.4	0.8	1.5	1.95	1.55	2.1

L = 20-200 MHz M = 200-1500 MHz U = 1500-3000 MHz

### Typical Performance Data

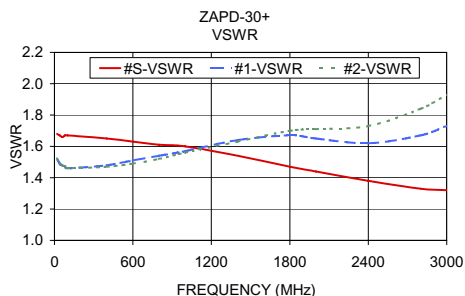
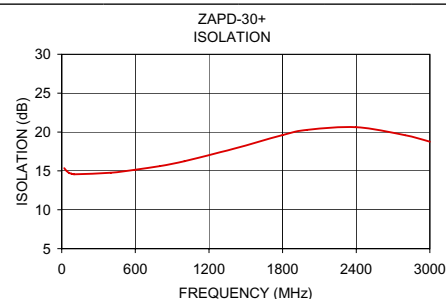
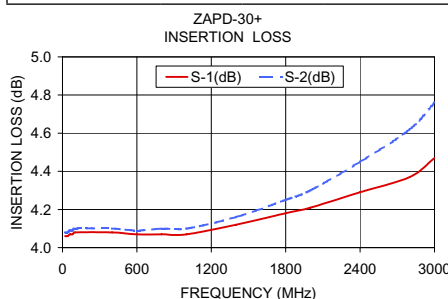
Frequency (MHz)	Insertion Loss (dB)		Amplitude Unbalance (dB)	Isolation (dB)	Phase Unbalance (deg.)	VSWR S	VSWR 1	VSWR 2
	S-1	S-2						
20.00	4.06	4.08	0.02	15.35	0.01	1.68	1.52	1.52
40.00	4.06	4.08	0.02	14.99	0.03	1.67	1.49	1.49
60.00	4.07	4.09	0.02	14.75	0.04	1.66	1.48	1.48
80.00	4.07	4.09	0.02	14.64	0.05	1.67	1.47	1.47
100.00	4.08	4.10	0.02	14.57	0.04	1.67	1.46	1.46
400.00	4.08	4.10	0.02	14.77	0.22	1.65	1.48	1.47
600.00	4.07	4.09	0.03	15.14	0.30	1.63	1.51	1.49
800.00	4.07	4.10	0.03	15.62	0.34	1.61	1.54	1.52
1000.00	4.07	4.10	0.03	16.24	0.48	1.60	1.57	1.56
1400.00	4.12	4.16	0.04	17.85	0.61	1.54	1.64	1.63
1800.00	4.18	4.25	0.07	19.60	0.66	1.47	1.67	1.70
2000.00	4.21	4.30	0.09	20.27	0.71	1.44	1.65	1.71
2400.00	4.29	4.45	0.17	20.63	0.92	1.38	1.62	1.73
2800.00	4.37	4.62	0.25	19.58	1.43	1.33	1.67	1.84
3000.00	4.47	4.76	0.28	18.76	1.80	1.32	1.73	1.93

### Outline Drawing

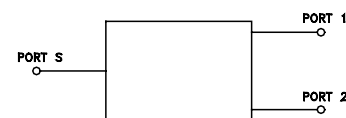


### Outline Dimensions (inch/mm)

A	B	C	D	E	F	G			
2.00	2.00	.75	1.00	.25	1.500	.125			
50.80	50.80	19.05	25.40	6.35	38.10	3.18			
							wt		
							grams		
H	J	K	L				170.0		
.39	1.00	.50	1.00						
9.91	25.40	12.70	25.40						



### electrical schematic



**Mini-Circuits®**  
ISO 9001 ISO 14001 CERTIFIED

ALL NEW  
minicircuits.com

P.O. Box 350166, Brooklyn, New York 11235-0003 (718) 934-4500 Fax (718) 332-4661 For detailed performance specs & shopping online see Mini-Circuits web site



The Design Engineers Search Engine Provides ACTUAL Data Instantly From MINI-CIRCUITS At: [www.minicircuits.com](http://www.minicircuits.com)

RF/IF MICROWAVE COMPONENTS

REV. A  
M114262  
ZAPD-30+  
HY/TD/CP/AM  
080714